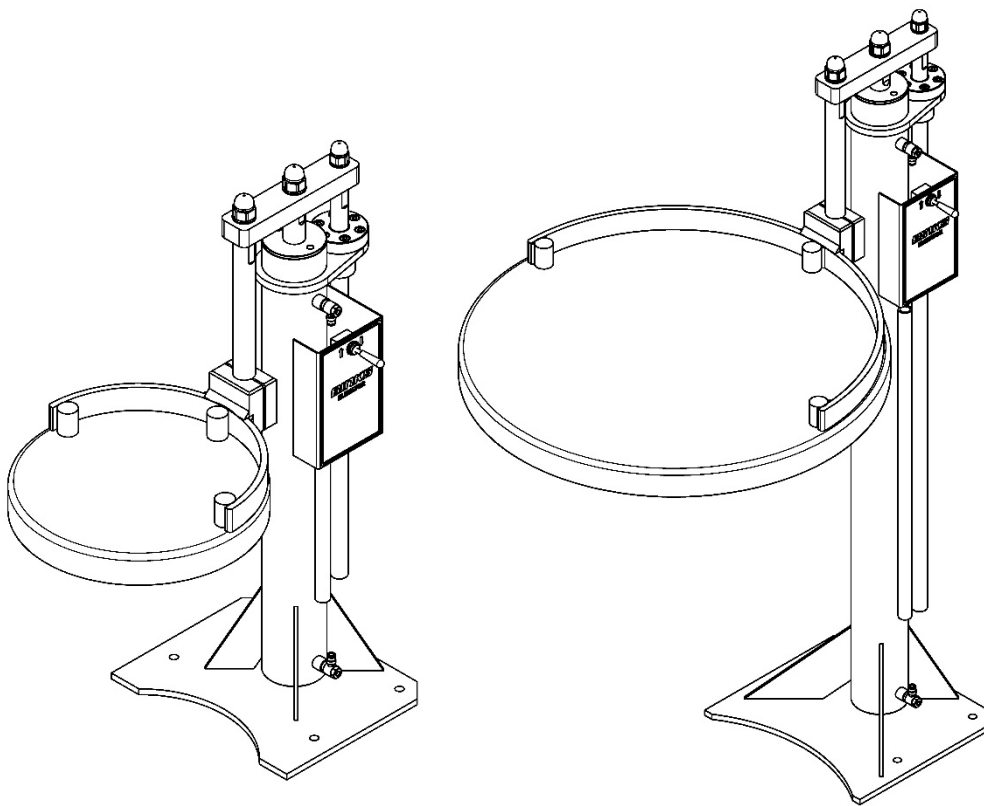




Instruction Manual

25L & 205L Elevator

- 104153 – 25L Elevator
- 104112 – 205L Elevator
- 104154 – 25L Elevator + Agitator Control
- 104155 – 205L Elevator + Agitator Control



Product Description Pneumatic Elevator 104112, 104153, 104154,
104155

This Product is designed for use with: Solvent and Water based Materials

Suitable for use in hazardous area: Zone 1 & 2

Protection Level: II 2 G X T4

Manufacturer: Binks,
Ringwood Road,
Bournemouth, BH11 9LH. UK

EU Declaration of Conformity



We: Binks declare that the above product conforms with the Provisions of:

Machinery Directive 2006/42/EC

ATEX Directive 94/9/EC

by complying with the following statutory documents and harmonized standards:

EN ISO 12100: Safety of Machinery - General Principles for Design

EN ISO 4414: Pneumatic Fluid Power - General Rules and safety requirements

EN1127-1: Explosive atmospheres - Explosion prevention - Basic concepts

EN 13463-1: Non electrical equipment for use in potentially explosive atmospheres - Basic methods and requirements

EN 13463-5: Non electrical equipment for use in potentially explosive atmospheres - Protection by constructional safety

Providing all conditions of safe use stated within the product manuals have been complied with and that the final equipment into which this product is installed has been re-assessed as required, in accordance with essential health and safety requirements of the above standards, directives and statutory instruments and also installed in accordance with any applicable local codes of practice.

A handwritten signature in black ink that reads 'D Smith'.

D Smith (General Manager)
18/5/15

WARNING

Directions for Working Safety

This Product has been constructed according to advanced technological standards and is operationally reliable. Damage may, however, result if it is used incorrectly by untrained persons or used for purposes other than those for which it was constructed.

The locally current regulations for safety and prevention of accidents are valid for the operation of this product under all circumstances.

International, national and company safety regulations are to be observed for the installation and operation of this product, as well as the procedures involved in maintenance, repairs and cleaning.

These instructions are intended to be read, understood and observed in all points by those responsible for this product. These operating and maintenance instructions are intended to ensure trouble free operation. Therefore, it is recommended to read these instructions carefully before start-up. Binks PCE cannot be held responsible for damage or malfunctions resulting from the non-observance of the operating instructions. These instructions including regulations and technical drawings may not be copied, distributed, used for commercial purposes or given to others either in full or in part without the consent of Binks PCE. We reserve the right to alter drawings and specifications necessary for the technical improvement of this product without notice.



Equipment Misuse Hazard

Equipment misuse can cause the equipment to rupture or malfunction and result in serious injury.

- This equipment is for professional use only.
- Read all instruction manuals, tags, and labels before operating the equipment.
- Use the equipment only for its intended purpose.
- Do not alter or modify this equipment. Use only genuine Binks PCE parts and accessories.
- Check equipment daily. Repair or replace worn or damaged parts immediately.
- Do not exceed the maximum working pressure stated on the equipment or in the Technical Data for your equipment. Do not exceed the maximum working pressure of the lowest rated component in your system.
- Use fluids and solvents which are compatible with the equipment wetted parts. Refer to the Technical Data section of all equipment manuals. Read the fluid and solvent manufacturer's warnings.
- Route hoses away from traffic areas, sharp edges, moving parts, and hot surfaces. Do not expose hoses to temperatures above 82°C (180°F) or below -40°C (-40°F).
- Do not lift pressurized equipment.
- Comply with all applicable local, state, and national fire, electrical, and safety regulations.



Fire, Explosion and Electric Shock Hazard

Improper grounding, poor ventilation, open flames or sparks can cause a hazardous condition and result in a fire, explosion, or electric shock.

When installed and operated in accordance with its instructions, the pump is approved for operation in Zone 1 (Europe) & Division 1 (North America), hazardous locations. (ATEX Cat 2)



- Electrical equipment must be installed, operated, and serviced only by trained, qualified personnel who fully understand the requirements stated in this instruction manual.
- Ground the equipment and all other electrically conductive objects in the spray area. After grounding test with ohmmeter to ensure earth continuity is 1 ohm or less.
- Keep all covers tight while the motor is energized.
- If there is any static sparking or you feel an electric shock while using this equipment, stop spraying/dispensing immediately. Do not use the equipment until you identify and correct the problem.
- Provide fresh air ventilation to avoid the build up of flammable fumes from solvents or the fluid being pumped.
- Keep the pumping area free of debris, including solvent, rags, and gasoline.
- Electrically disconnect all equipment in the pumping area.
- Extinguish all open flames or pilot lights in the spray/dispense area.
- Do not smoke in the spray/dispense area.
- Do not turn on or off any light switch in the spray/dispense area while operating or if fumes are present.



WARNING



READ THE MANUAL

Before operating equipment, read and understand all safety, operation and maintenance information provided in the operation manual.



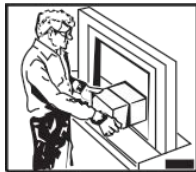
DE-ENERGIZE, DEPRESSURIZE, DISCONNECT AND LOCK OUT ALL POWER SOURCES DURING MAINTENANCE

Failure to De-energize, disconnect and lock out all power supplies before performing equipment maintenance could cause serious injury or death.



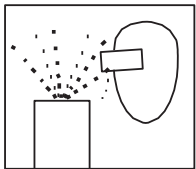
OPERATOR TRAINING

All personnel must be trained before operating equipment.



KEEP EQUIPMENT GUARDS IN PLACE

Do not operate the equipment if the safety devices have been removed.



PROJECTILE HAZARD

You may be injured by venting liquids or gases that are released under pressure, or flying debris.



PINCH POINT HAZARD

Moving parts can crush and cut. Pinch points are basically any areas where there are moving parts.



MAGNETIC FIELD PRESENT

You may be subjected to magnetic fields which may interfere with the operation of certain pacemakers.



WEAR SAFETY GLASSES

Failure to wear safety glasses with side shields could result in serious eye injury or blindness.



NOISE HAZARD

You may be injured by loud noise. Hearing protection may be required when using this equipment.



KNOW WHERE AND HOW TO SHUT OFF THE EQUIPMENT IN CASE OF AN EMERGENCY



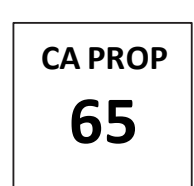
HIGH PRESSURE CONSIDERATION

High pressure can cause serious injury. Relieve all pressure before servicing. Hose leaks, or ruptured components can inject fluid into your body and cause extremely serious injury.



AUTOMATIC EQUIPMENT

Automatic equipment may start suddenly without warning.



PROP 65 WARNING

WARNING: This product contains chemicals known to the State of California to cause cancer and birth defects or other reproductive harm.



MAGNET HAZARD

Take care when handling magnets. Avoid getting magnets in close proximity of each other. Injury or damage to magnets may result.

Specification			
Feature			Remarks
Maximum Working Air Pressure		7 Bar / 101 psi	
Air Inlet		1/4" BSP F	
Air Quality		ISO 8573-1 Class 5/5/4	Dirt 40 Microns Water +7°C @ 7 Bar Oil 25mg/m ³
Stroke	25L Elevator	500 mm / 19.7"	
	205L Elevator	955 mm / 37.6"	
Unit Height - Fully Extended	25L Elevator	1380 mm / 54"	
	205L Elevator	2270 mm / 89"	
Weight	25L Elevator	45.5 Kg / 100 lbs	
	205L Elevator	64 Kg / 140 lbs	

General Description

This equipment is designed for use with Solvent based and Waterborne materials. Suitable for use in Zone 1 and 2, Protection Level: II 2 G X

The pneumatic operated elevator is driven both upwards and downwards by an air cylinder. Typical applications are raising and lowering of a drum cover which has a paint pump and mixer or other accessories mounted to it. This allows the changing of drums with a minimum of inconvenience to the operator.

- Clean and simple air operated
- 25L - 500mm / 19.7" Stroke, maximum drum size Ø340mm
- 205L - 955mm / 37.6" Stroke, maximum drum size Ø640mm
- Speed control is possible in both directions
- Elevator can be positioned anywhere along its stroke and will not drop
- ATEX marked.

Installation – Setting to work

When the control valve lever is operated upward the elevator will lift, when the lever is operated back to the central position the elevator will stop.

When the control valve lever is operated downward the elevator will lower, when the lever is operated back to the central position the elevator will stop.

The drum cover/lid position should be set by moving the drum lid support on the support bar so there is a small clearance with the top of the drum when the elevator is in the bottom position.

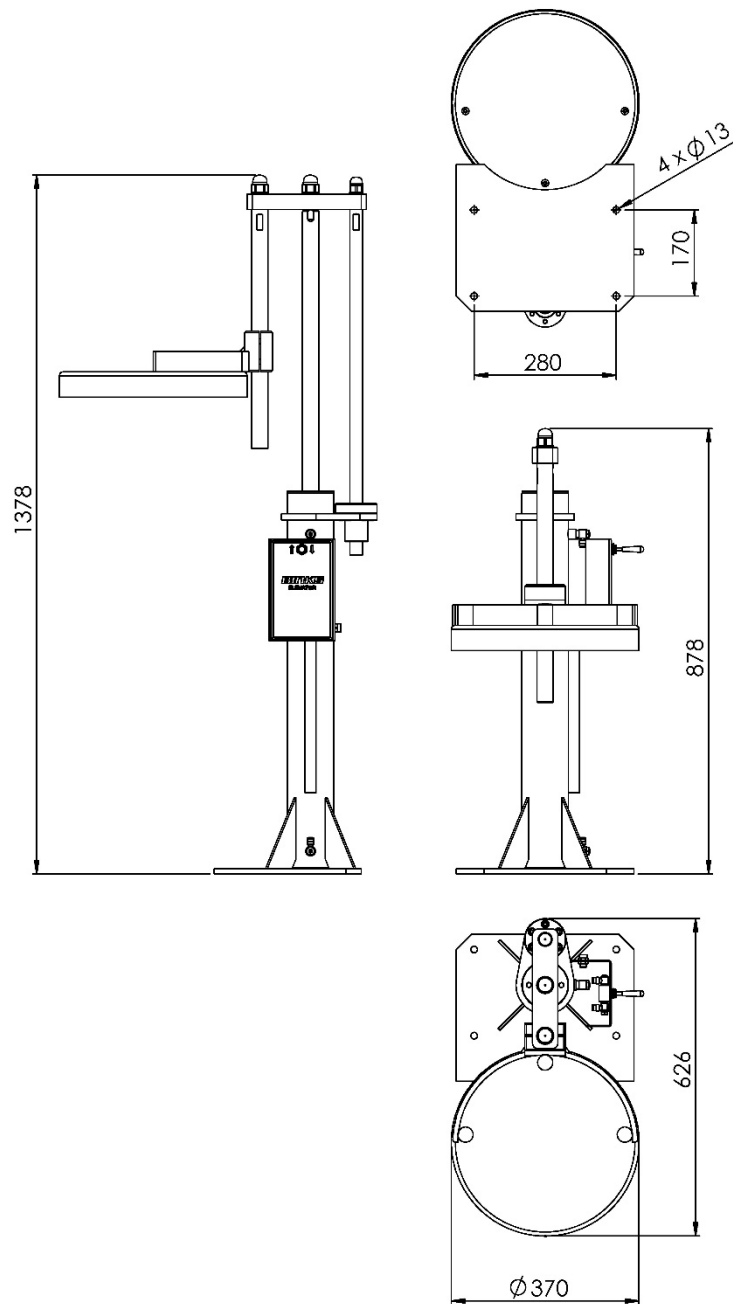
To control the speed of the elevator, adjust the flow restrictors mounted to the cylinder. Note these control on the exhaust stroke only.

CAUTION: The elevator should not be used as a permanent support Air may leak and allow a gradual lowering.

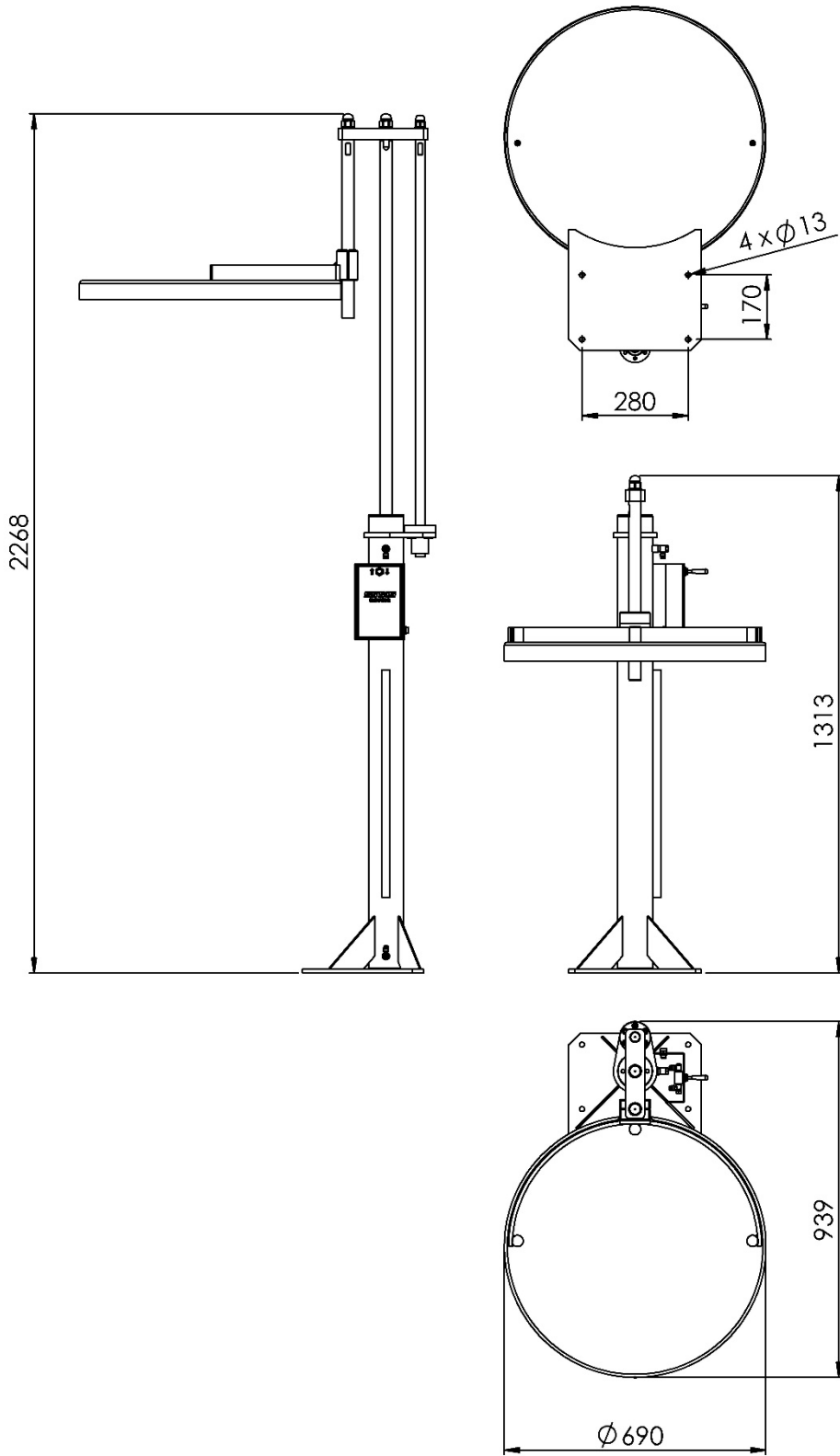
Ensure personnel are clear of the elevator prior to operating and the operator has an unobstructed view of the unit.

Installation – Mounting

- Fix the base of the elevator securely and rigidly to the floor or mounting surface.
- Air supply connection: 3 Bar minimum; 7 Bar maximum.
- Operating valves should be located within two metres of the elevator.
- Speed of travel 0.1 m/s (full stroke in 9seconds +/- 1 second).
- Use one of the floor mounting bolts to fully earth the unit back to a clean earth connection point.



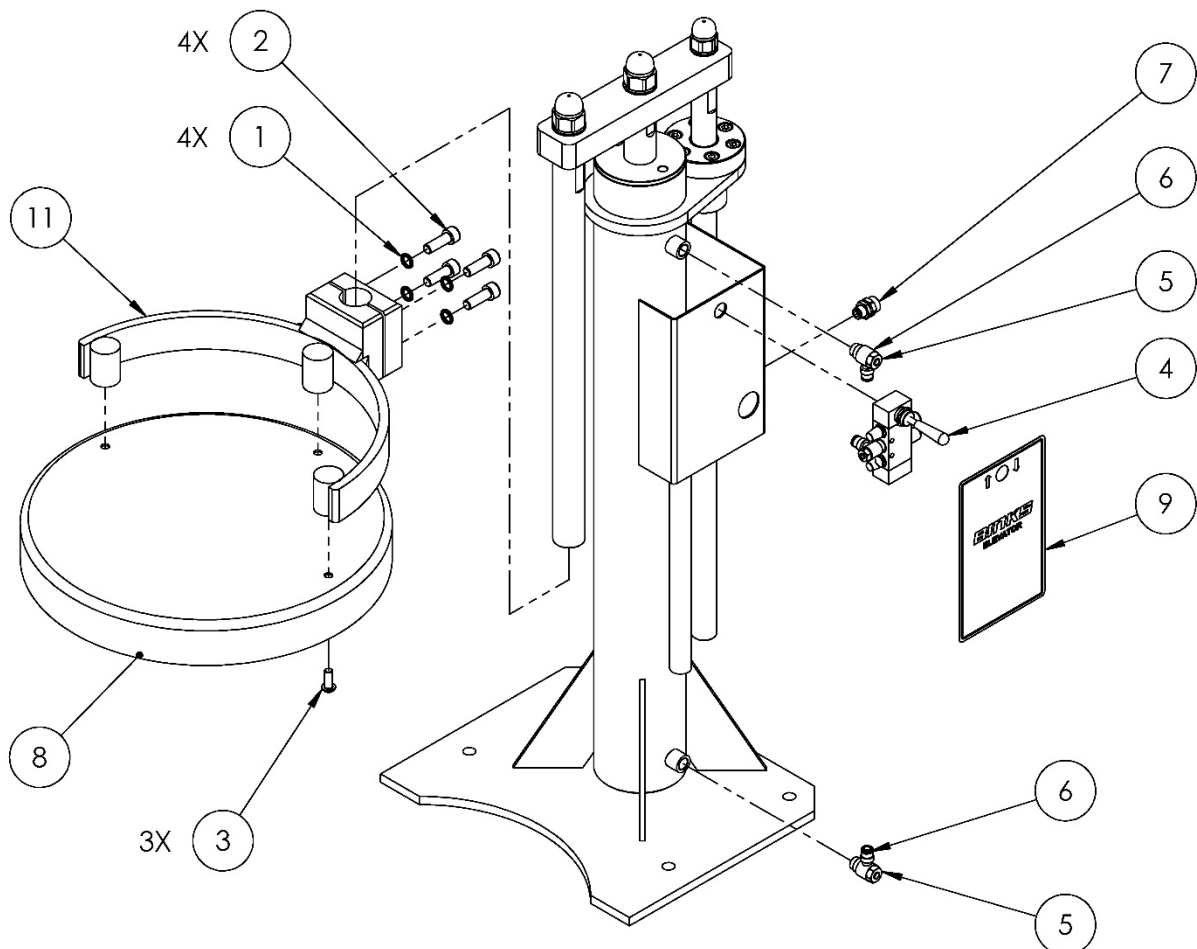
25L OVERALL DIMENSIONS



205L OVERALL DIMENSIONS

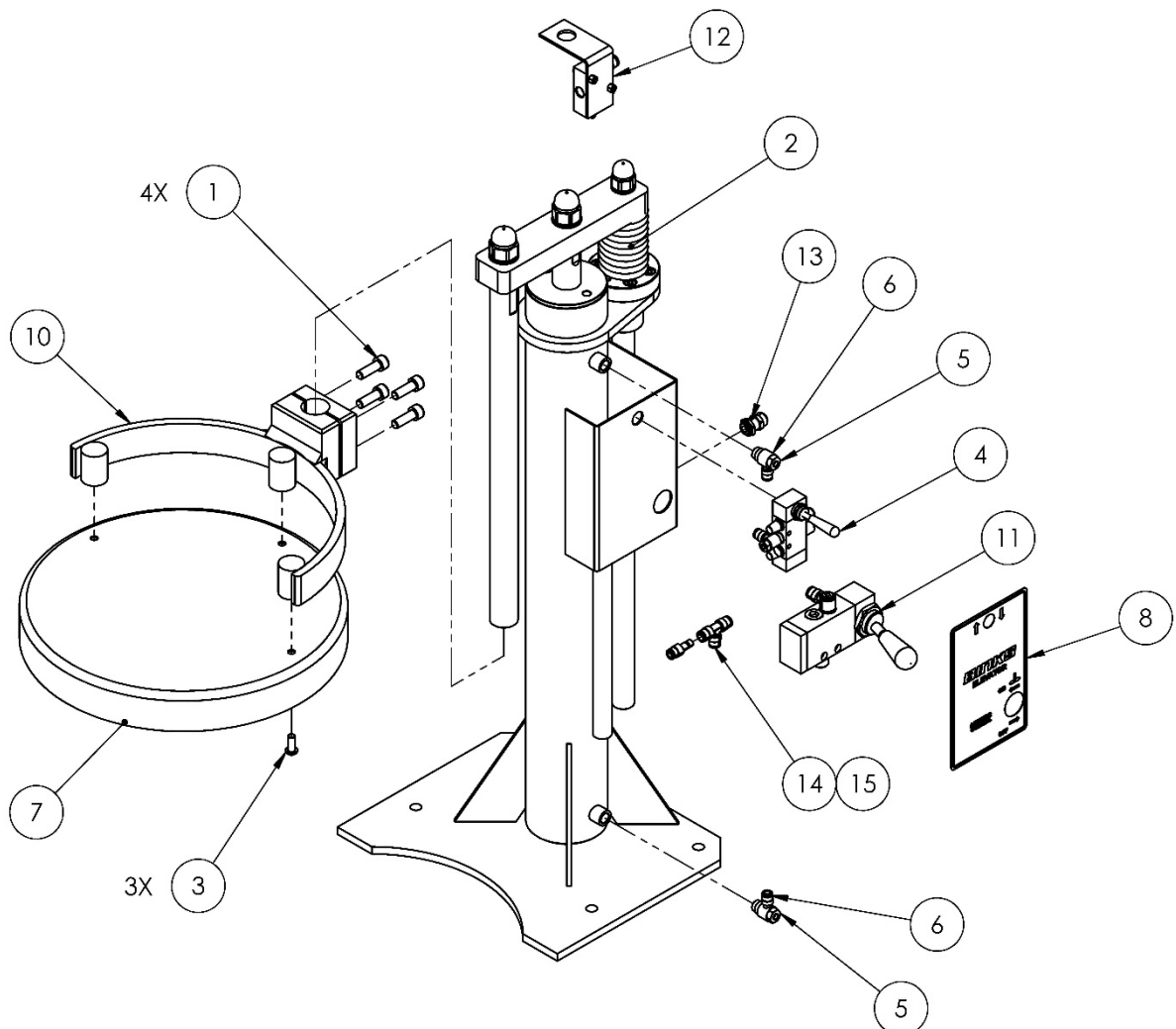
25L Elevator (104153) - Parts Lists

Parts List - 104153 25L Elevator				
Item	Part No.	Description	Qty.	Remarks
1	165123	M10 SPRING WASHER	4	
2	165988	M10 x 30 CAPHEAD SCREW	4	
3	177021	M8 x 20 BUTTON HD SCREW	3	
4	193925	AIR CONTROL ASSEMBLY	1	#
5	193965	1/4" FLOW RESTRICTOR	2	#
6	193966	Ø6 1/4" SINGLE BANJO CONNECTOR	2	
7	193967	Ø6 - 1/4" FEMALE BULKHEAD	1	INLET
8	194346	DRUM LID	1	
9	194400	ELEVATOR DECAL	1	
10	194402	BARE 25L ELEVATOR	1	
11	194423	LID SUPPORT	1	
12	170244	Ø6 x 4 PU HOSE - BLACK	1.25m	NOT SHOWN



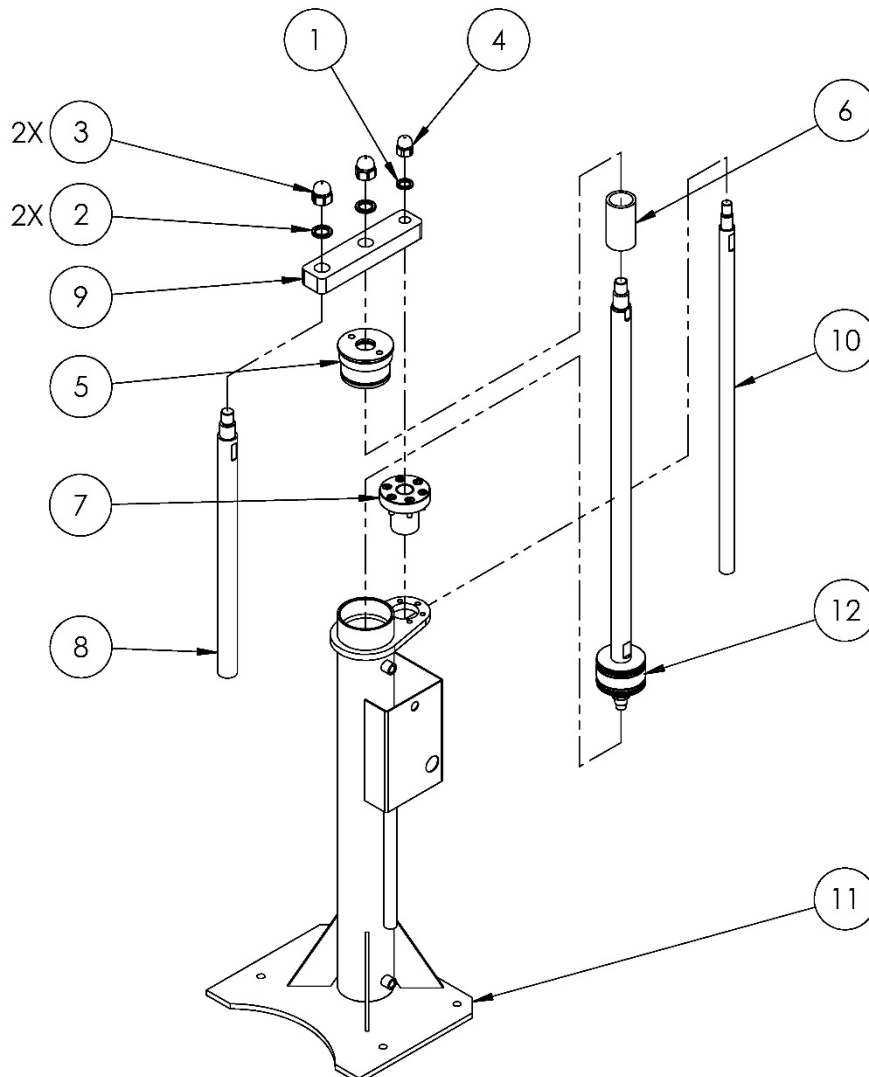
25L Elevator + Agitator Control (104154) – Parts Lists

Parts List - 104154 25L Elevator				
Item	Part No.	Description	Qty.	Remarks
1	165988	M10 x 30 CAPHEAD SCREW	4	
2	170252	2m x Ø8mm X Ø5.5mm - COILED HOSE	1	
3	177021	M8 x 20 BUTTON HEAD CAP SCREW	3	
4	193925	AIR CONTROL ASSEMBLY	1	
5	193965	1/4" UNI-DIRECTIONAL FLOW RESTRICTOR	2	
6	193966	Ø6 1/4" SINGLE BANJO RING CONNECTOR	2	
7	194346	DRUM LID	1	
8	194401	ELEVATOR DECAL WITH AGITATOR CONTROL	1	
9	194402	BARE 20/30L ELEVATOR	1	
10	194423	LID SUPPORT	1	
11	194426	AGITATOR CONTROL VALVE ASSEMBLY	1	#
12	194427	AGITATOR SAFETY VALVE ASSEMBLY	1	#
13	194933	Ø8mm - 1/4" BULKHEAD	1	
14	194934	Ø8mm PUSH FIT TEE	1	
15	194935	Ø8mm TO Ø6mm REDUCER	1	
16	170244	Ø6 x 4 PU HOSE - BLACK	1.25m	NOT SHOWN
17	170254	Ø8 x 5 PU HOSE - BLACK	0.5m	NOT SHOWN



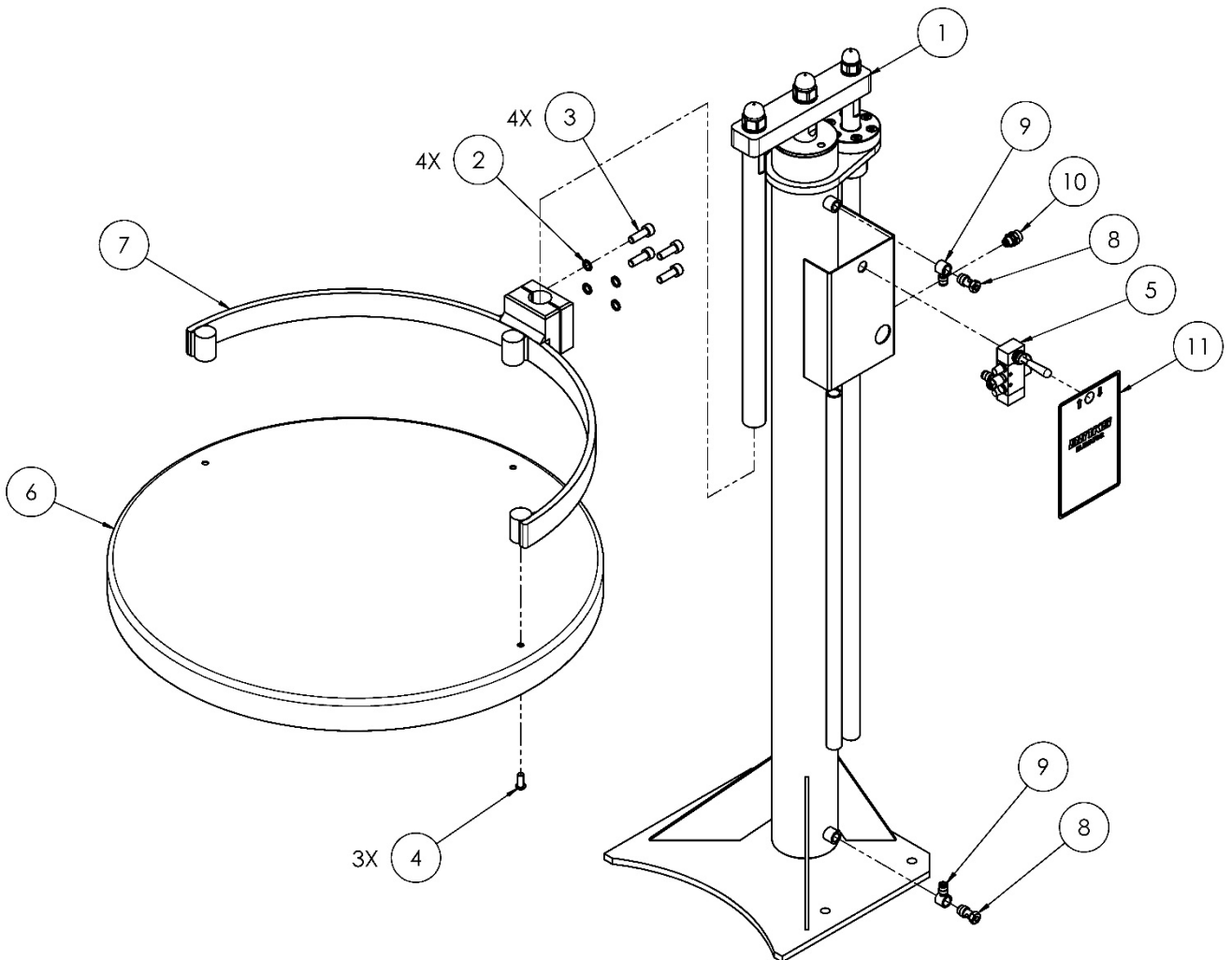
Bare 25L Elevator (194402) - Parts Lists

Parts List - 194402 Bare 25L Elevator				
Item	Part No.	Description	Qty.	Remarks
1	165100	M16 SPRING WASHER	1	
2	165139	M20 SPRING WASHER	2	
3	177040	M20 DOME NUT	2	
4	177052	M16 DOME NUT	1	
5	194356	Ø80 CYLINDER ROD HOUSING	1	
6	194364	ROD SPACER	1	
7	194413	ANTI ROTATION BEARING ASSY	1	#
8	194416	TANK LID BAR	1	
9	194418	TOP BAR	1	
10	194419	ANTI ROTATION BAR	1	
11	194420	25L BARE ELEVATOR FABRICATION	1	
12	194421	25L ELEVATOR SHAFT ASSEMBLY	1	



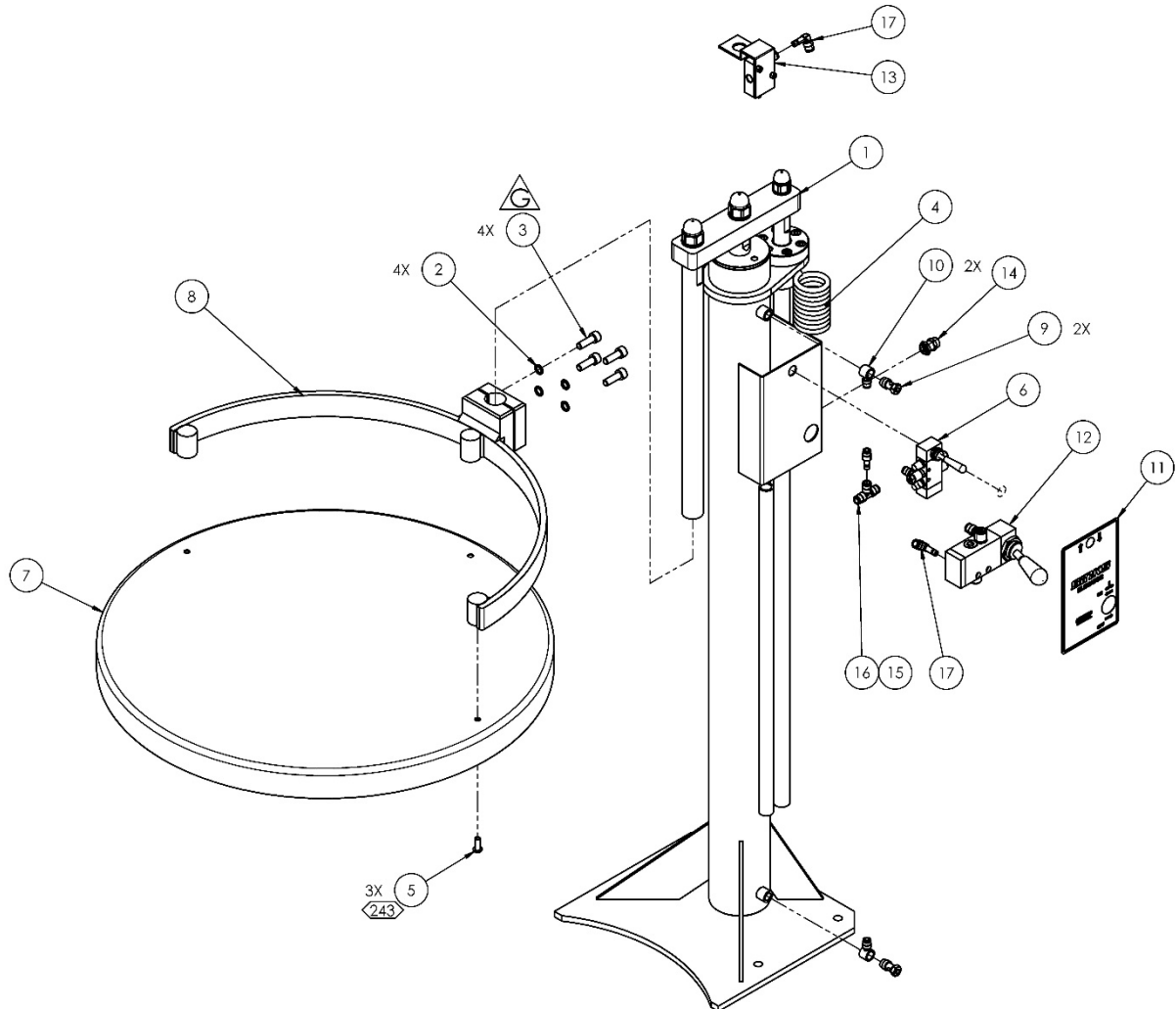
205L Elevator (104112) - Parts Lists

Parts List - 104112 205L Elevator				
Item	Part No.	Description	Qty.	Remarks
1	104109	205L BARE ELEVATOR ASSEMBLY	1	
2	165123	M10 SPRING WASHER	4	
3	165988	M10 x 30 CAPHEAD SCREW	4	
4	177021	M8 x 20 BUTTON HD SCREW	3	
5	193925	AIR CONTROL ASSEMBLY	1	#
6	193926	DRUM LID	1	
7	193927	LID SUPPORT	1	
8	193965	1/4" FLOW RESTRICTOR	2	#
9	193966	Ø6 1/4" SINGLE BANJO CONNECTOR	2	
10	193967	Ø6 - 1/4" FEMALE BULKHEAD	1	INLET
11	194400	ELEVATOR DECAL	1	
12	170244	Ø6 x 4 PU HOSE - BLACK	2m	NOT SHOWN



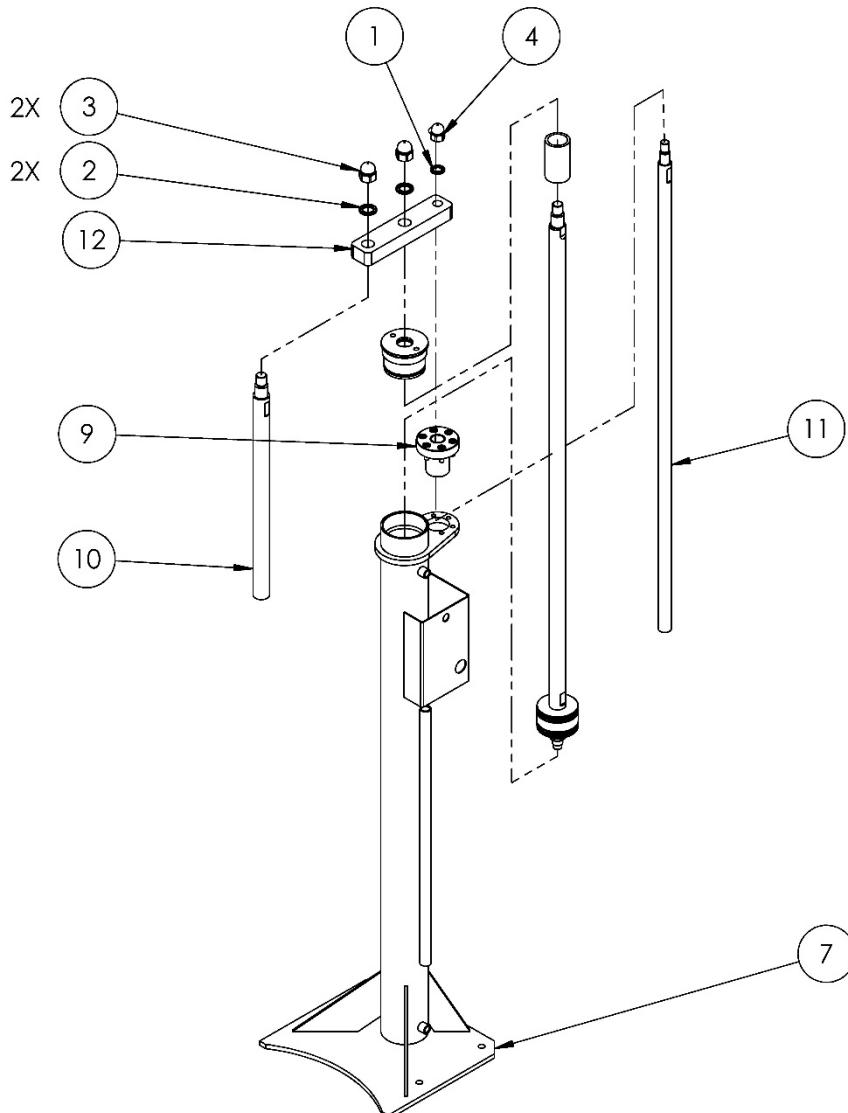
205L Elevator + Agitator Control (104155) - Parts Lists

Parts List - 104155 205L Elevator				
Item	Part No.	Description	Qty.	Remarks
1	104109	205L BARE ELEVATOR ASSEMBLY	1	
2	165123	Ø10 SPRING WASHER (STST)	4	
3	165565	M10 x 30 CAP HD SCREW (PLATED)	4	
4	170252	2m x Ø8mm X Ø5.5mm - COILED HOSE	1	
5	177021	M8 x 20 BUTTON HEAD CAP SCREW	3	
6	193925	AIR CONTROL ASSEMBLY	1	
7	193926	DRUM LID	1	
8	193927	LID SUPPORT	1	
9	193965	1/4" UNI-DIRECTIONAL FLOW RESTRICTOR	2	
10	193966	Ø6 1/4" SINGLE BANJO CONNECTOR	2	
11	194401	ELEVATOR DECAL	1	
12	194426	AGITATOR CONTROL VALVE ASSEMBLY	1	#
13	194836	AGITATOR SAFETY VALVE ASSEMBLY	1	#
14	194933	Ø8mm - 1/4" BULKHEAD	1	
15	194935	Ø8mm TO Ø6mm REDUCER	1	
16	194934	Ø8mm PUSH FIT TEE	1	
17	194939	Ø8n PUSH IN ELBOW - PLATED	2	
18	170244	Ø6 x 4 PU HOSE - BLACK	3m	NOT SHOWN
19	170254	Ø8 x 5 PU HOSE - BLACK	0.5m	NOT SHOWN



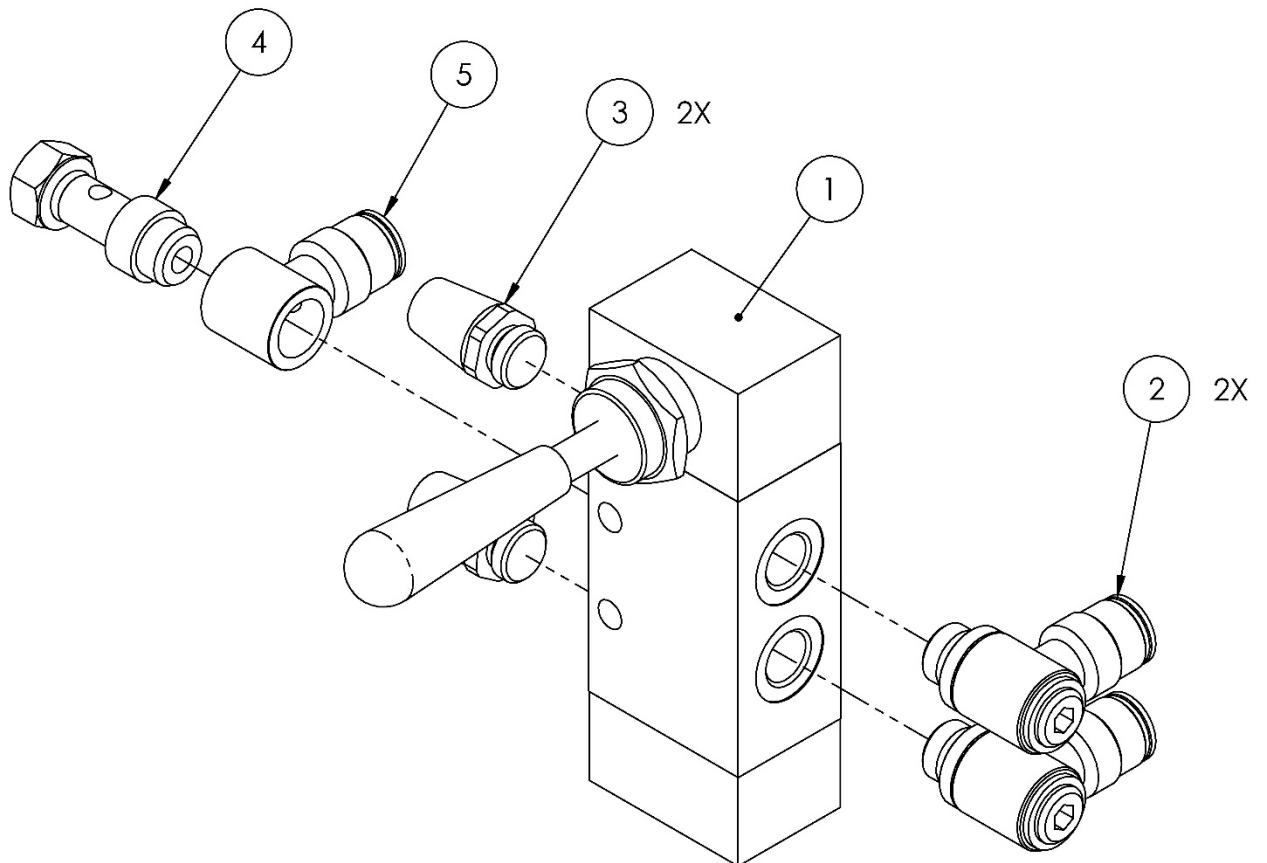
Bare 205L Elevator (104109) - Parts Lists

Parts List - 104109 Bare 205L Elevator				
Item	Part No.	Description	Qty.	Remarks
1	165100	M16 SPRING WASHER	1	
2	165139	M20 SPRING WASHER	2	
3	177040	M20 DOME NUT	2	
4	177052	M16 DOME NUT	1	
5	194356	Ø80 CYLINDER ROD HOUSING	1	
6	194364	ROD SPACER	1	
7	194403	205L BARE ELEVATOR FABRICATION	1	
8	194411	205L ELEVATOR SHAFT ASSEMBLY	1	
9	194413	ANTI ROTATION BEARING ASSY	1	#
10	194416	TANK LID BAR	1	
11	194417	ANTI ROTATION BAR	1	
12	194418	TOP BAR	1	



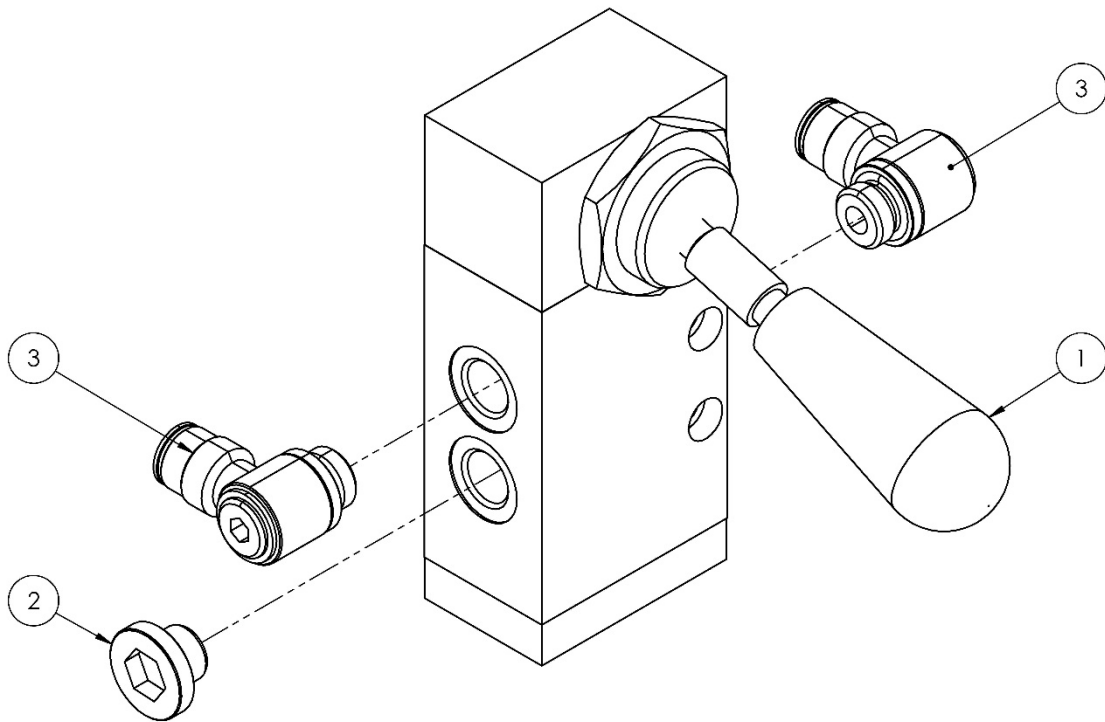
193925 Elevator Control Detail

Parts List - 193925 Elevator Control				
Item	Part No.	Description	Qty.	Remarks
1	193960	5/3 LEVER VALVE - NON LATCHING	1	#
2	193961	SINGLE Ø6 - 1/8" BANJO	2	
3	193962	1/8" SINTED BRASS SILENCER	2	
4	193963	1/8" FLOW RESTRICTOR	1	#
5	193964	Ø6-1/8" SINGLE BANJO CONNECTOR	1	



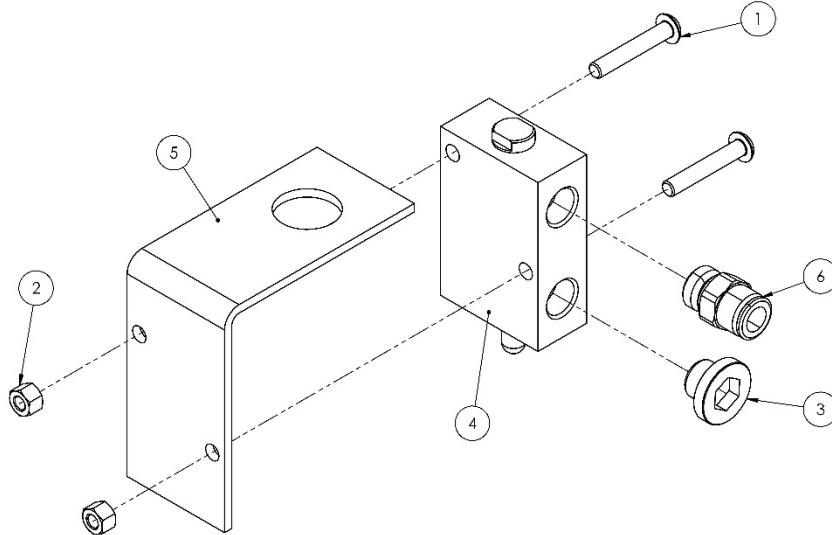
194426 Agitator Control Detail

Parts List - 194426 Agitator Control				
Item	Part No.	Description	Qty.	Remarks
1	194314	¼" LEVER VALVE	1	
2	193246	¼" PLATED BLANKING PLUG	1	
3	194936	¼" - Ø8 SINGLE BANJO	2	



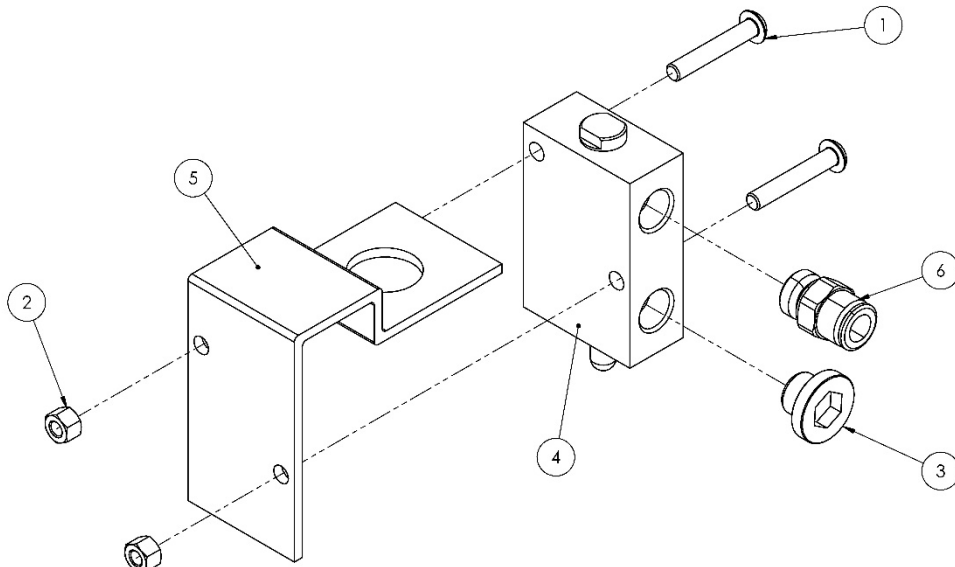
Parts List - 194427 Agitator Safety Valve

Item	Part No.	Description	Qty.	Remarks
1	177117	M5 x 30 BUTTON HD CAP SCREW	2	
2	177118	M5 NUT	2	
3	193246	¼" PLATED BLANKING PLUG	1	
4	194312	3/2 PLUNGER VALVE	1	
5	194313	PLUNGER VALVE BRACKET	1	
6	194937	Ø8 - 1/4" MALE STUD	1	



Parts List - 194836 Agitator Safety Valve

Item	Part No.	Description	Qty.	Remarks
1	177117	M5 x 30 BUTTON HD CAP SCREW	2	
2	177118	M5 NUT	2	
3	193246	¼" PLATED BLANKING PLUG	1	
4	194312	3/2 PLUNGER VALVE	1	
5	194837	PLUNGER VALVE BRACKET	1	
6	194937	Ø8 - 1/4" MALE STUD	1	

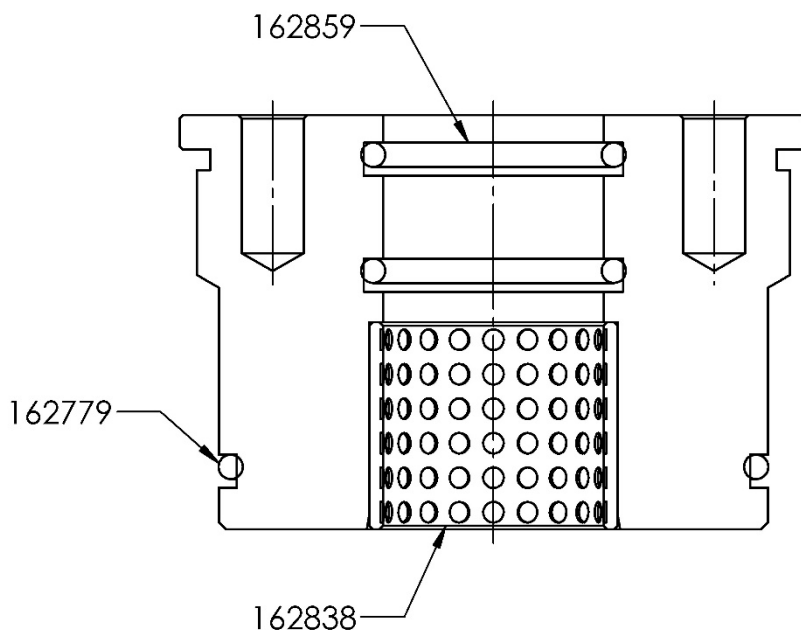


# Spare Parts For – (104153 & 104154) 25L Elevator				
Item	Part No.	Description	Qty	Remarks
1	250724	CYLINDER SEAL KIT	1	
2	193925	ELEVATOR CONTROL	1	
3	193960	5/3 LEVER VALVE – NON LATCHING	1	
4	193963	1/8" FLOW RESTRICTOR	1	
5	193965	1/4" FLOW RESTRICTOR	2	
6	194413	ANTI ROTATION BEARING ASSY	1	
7	194426	AGITATOR CONTROL ASSEMBLY	1	
8	194427	AGITATOR SAFETY VALVE ASSEMBLY	1	

# Spare Parts For – (104112 & 104155) 205L Elevator				
Item	Part No.	Description	Qty	Remarks
1	250724	CYLINDER SEAL KIT	1	
2	193925	ELEVATOR CONTROL	1	
3	193960	5/3 LEVER VALVE – NON LATCHING	1	
4	193963	1/8" FLOW RESTRICTOR	1	
5	193965	1/4" FLOW RESTRICTOR	2	
6	194413	ANTI ROTATION BEARING ASSY	1	
7	194426	AGITATOR CONTROL ASSEMBLY	1	
8	194836	AGITATOR SAFETY VALVE ASSEMBLY	1	

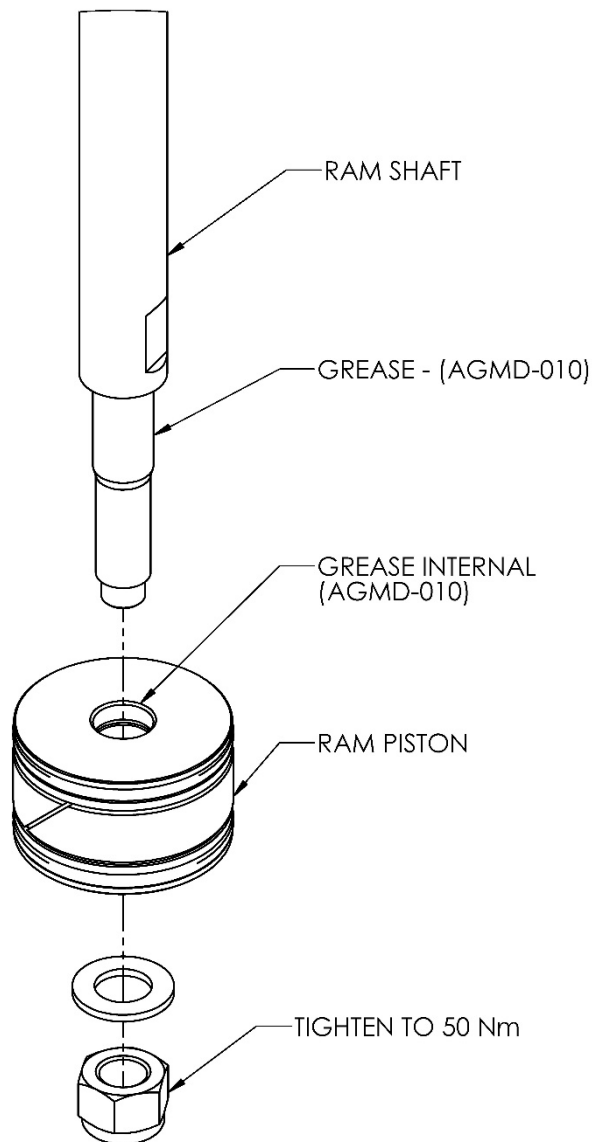
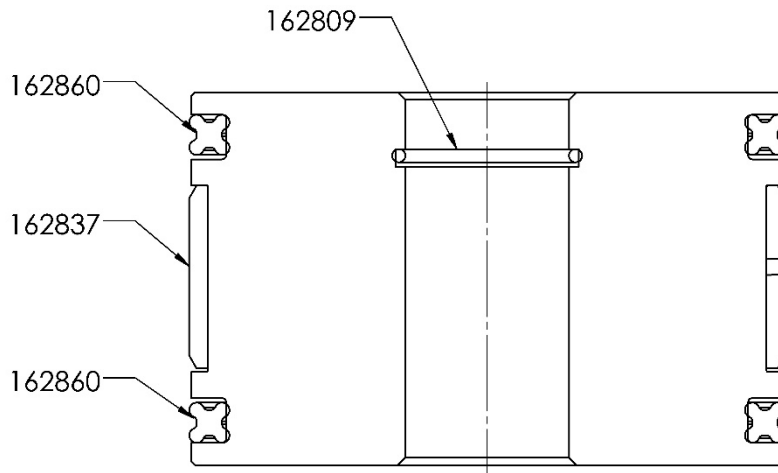
Cylinder Service Reference – Spares Kit 250724

CYLINDER ROD HOUSING ASSEMBLY



Cylinder Service Reference – Spares Kit 250724

RAM PISTON





Justus-von-Liebig-Straße 31, 63128 Dietzenbach. DE
Tel. +49 (0) 6074 403 1 Fax. +49 (0) 607 403 300
General e-mail: info@finishingbrands.eu

Ringwood Road, Bournemouth, Dorset BH11 9LH. UK
Tel. +44 (0)1202 571 111 Fax. +44 (0)1202 573 488
General e-mail: info@finishingbrands.eu

USA Canada Customer Service

195 Internationale Blvd.
Glendale Height,IL 60139
630-237-5000

Toll Free Customer Service and
Technical Support 800-992-4657
Toll Free Facsimile 800-246-5732